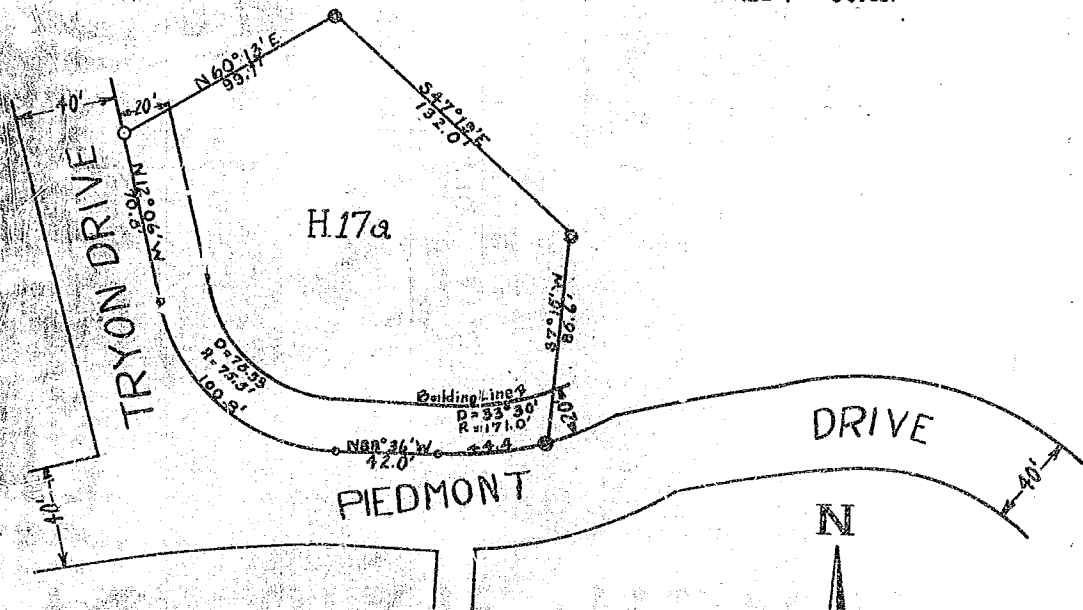


Note: Iron Pins at all Corners

PLAT OF
LOT NO. 17a—SECTION H
HOGBACK MOUNTAIN SECTION
BLUE RIDGE FOREST
SCALE 1" = 50 feet



Surveyed by W. S. Hartley, Engineer
Recorded by *W. S. Hartley, Jr.*
Jan. 28, 1927 at 8:20 A.M.

